

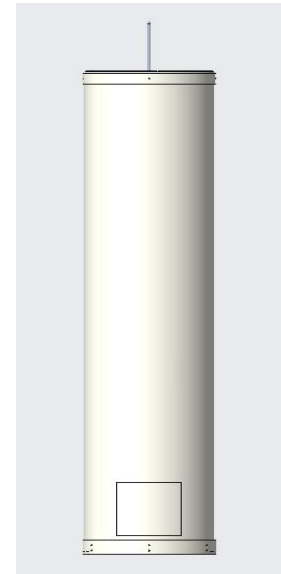
**18-ports Antenna 890-960&1710-2690MHz 16&17dBi 2-12°&2-12°T (Tri-sector)****HPBW: 65°****Connector: 4.3-10 Female****Electrical Specifications(BASTA)**

Frequency Range(MHz)	698-960		
	698-806	824-894	880-960
Polarization(°)	±45		
Electrical Downtilt(°)	2~12		
Gain (dBi)	15.0±0.5	15.5±0.5	16.0±0.5
First Upper Side Lobe Suppression (dB)	≥13		
Azimuth Beamwidth 3dB(°)	67±8	67±6	62±6
Elevation Beamwidth 3dB(°)	10.5±2	9.5±2	8.8±2
Cross-Polar Ratio @0°(dB)	≥20		
Front to Back Ratio 180°±30° (dB)	≥25		
Frequency Range(MHz)	1710-2690		
	1710-2170	2300-2400	2490-2690
Polarization(°)	±45		
Electrical Downtilt(°)	2~12		
Gain (dBi)	16.2±0.8	16.5±0.5	17.0±0.5
First Upper Side Lobe Suppression (dB)	≥15		
Azimuth Beamwidth 3dB(°)	65±8	65±7	60±5
Elevation Beamwidth 3dB(°)	9.0±2	7.5±2	7.0±2
Cross-Polar Ratio @0°(dB)	≥18		
Front to Back Ratio 180°±30° (dB)	≥25		
VSWR	≤1.5		
3rd PIM@2 x 43 dBm (dBc)	≤ -143		
Isolation (dB)	≥25		
Max. power per port(W)	400 (698-960MHz); 250 (1710-2690MHz)		
Impedance (Ω)	50		
Lightning Protection	DC Ground		

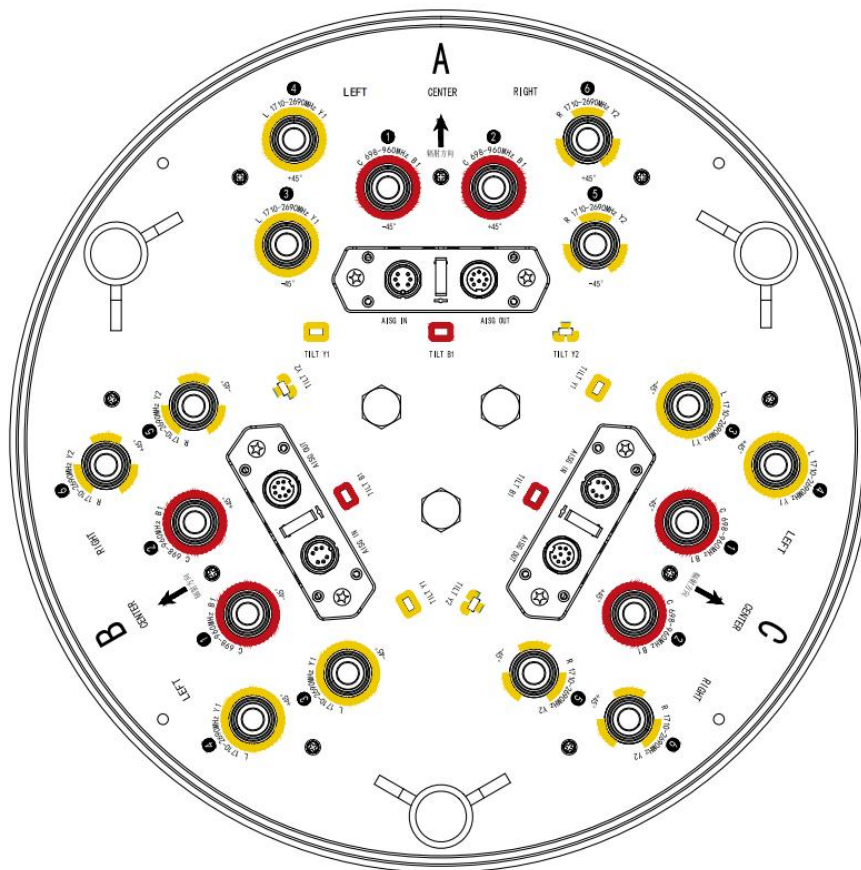
Mechanical Specifications(BASTA)

18-Port Antenna (Tri-sector)

RET type	Integrated RET (AISG2.0/3GPP)
AISG Connectors (1 input and 1 output)	2×8 pin (in: Male; out: Female)
Connector	3x6 x 4.3-10 Female , Bottom
Antenna dimensions (H x W x D) (mm)	Φ400x 2250
Antenna weight (kg)	97(Net)/112(Packaged)
Adjustable range of horizontal azimuth (°)	360(whole), 0(sector)
Radome material	Fiberglass
Radome color	Light Grey
Operational temperature (°C)	-40 ~ +60 °
Wind load @150km/h (N)	1280
Max. operational wind speed (km/h)	241

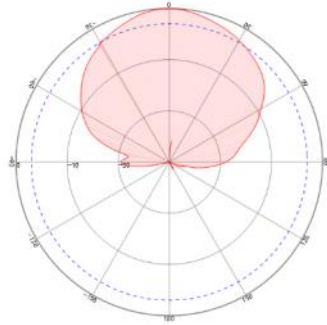


Layout

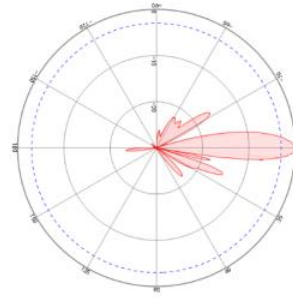


Frequency Range	Array	Connector
890-960MHz	R1	3-4(A/B/C)
1710-2690MHz	Y1/Y2	1-2/5-6(A/B/C)

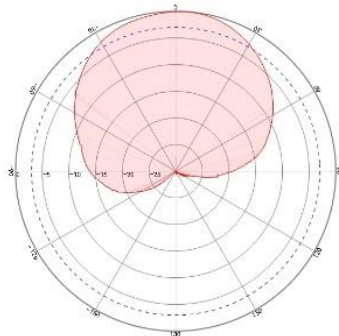
Pattern



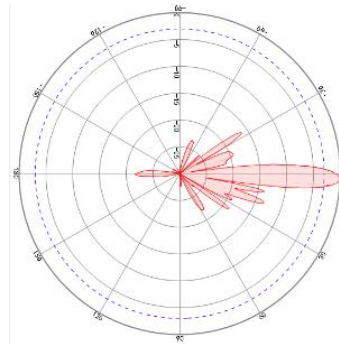
890-960 Horizontal pattern



890-960 Vertical pattern

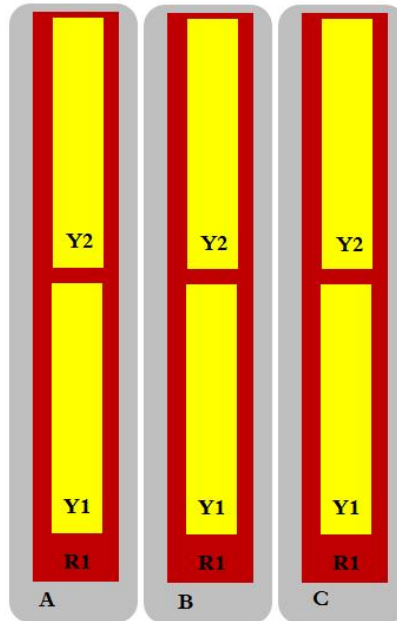


1710-2690 Horizontal pattern



1710-2690 Vertical pattern

Layout



Configuration Types