

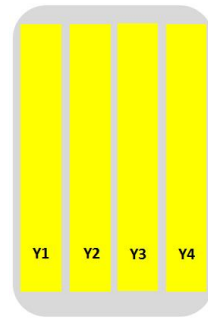
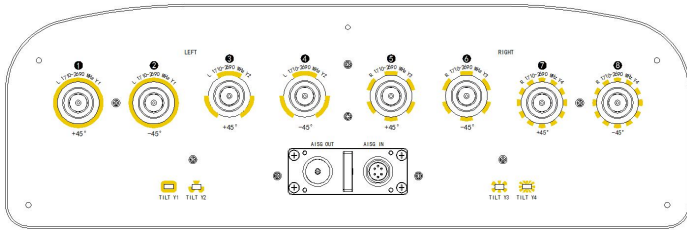
8-Port Antenna 4*(1710-2690)MHz/17.5dBi/65° /0~10° T
Integrated RET (AISG 2.0 Compliant)
8 x 4.3-10 Connectors/1.47m
Electrical Specifications(BASTA V11.1)

Frequency Range(MHz)		4*(1710-2690)(Y1,Y2,Y3,Y4)			
		1710-1920	1920-2180	2300-2400	2500-2690
Polarization(°)		±45			
Electrical Downtilt(°)		0-10 (Independent electric regulator)			
Gain (dBi)	Mid tilt	16.8	17.1	17.2	17.5
	Over all tilts	16.7±0.5	17.0±0.5	17.1±0.4	17.4±0.3
First upper Side Lobe Suppression (dB)		>16	>16	>16	>16
Azimuth Beamwidth 3dB(°)		67±5.0	64±4.0	62±3.5	60±3.5
Elevation Beamwidth 3dB(°)		6.3±0.5	6.0±0.5	5.2±0.4	5.0±0.3
Cross-Polar Ratio @0°(dB)		>20	>20	>18	>18
Cross-Polar Ratio @±60° (dB)		>10	>10	>7	>7
Front to Back Ratio 180°±30° (dB)		>25	>25	>26	>26
VSWR		< 1.5			
3rd PIM@2 x 43 dBm (dBc)		< -150			
Isolation: intra-system (dB)		> 28			
Isolation: inter-system (dB)		> 28			
Max. power per port(W)		250			
Impedance (Ω)		50			
Lightning Protection		DC Ground			

Mechanical Specifications(BASTA V11.1)

RET type	Integrated RET (AISG2.0/3GPP)	
AISG Connectors (1 input and 1 output)	2x8 pin (in: Male; out: Female)	
Connector	8×4.3-10 female , Bottom	
Antenna dimensions (H x W x D) (mm)	1470×500×156	
Packing dimensions (H x W x D) (mm)	1750×575×245	
Antenna weight (kg)	22	
Clamps weight (kg)	5.5	
Packing weight(kg)	30.5	
Diameter of installation pole	φ50 ~φ110mm	
Radome material	Fiberglass	
Mechanical Tilt Range (°)	0~10	
Radome color	Light grey	
Operational temperature (°C)	-40 to +60	
Wind load @150km/h (N)	678/211/904(Frontal/Lateral/Rear side)	
Max. operational wind speed (km/h)	241	

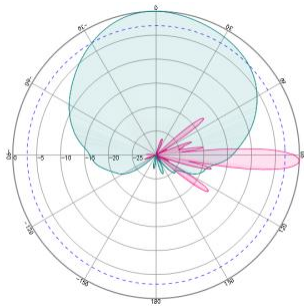
Layout



Frequency Range	Array	Connector
1710-2690MHz	Y1/Y2/Y3/Y4	1-2/3-4/5-6/7-8

Pattern

1710-2180MHz



2300-2690MHz

